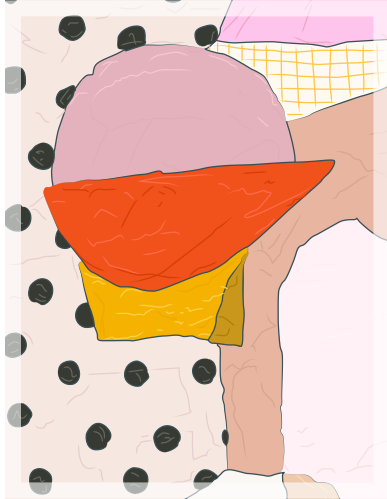




ARTIST BIO



Mary, A. (n.d.). *Slow sidewalk* [Acrylic]. Artfully Walls.



Born 1984



American Multi-Disciplinary Artist



Famous for abstract mixed-media paintings that show playful shapes and designs

OTHER WORKS

Poplar Building Mural in Philadelphia, PA. (2020)

Of Things (2020)

Dance House Mural, NE Minneapolis (2020)

Pink Show (2017)



“We meet the world in shapes. Our experiences are shapes. Our language is shapes. And so what I love about composing these shapes in different ways is that it ultimately feels familiar.” –Ashley Mary

Ashley Mary

ARTIST’S HISTORY

Ashley Mary grew up in the suburbs surrounding Minneapolis, MN. In college, she studied religion and discovered printmaking during her senior year. While working in a church for many years, she started selling small collage artworks on the side. As her business thrived, she decided to pursue her passion for art and make it her career. After freelancing for some years, she started her own art studio in 2016.

ARTIST’S WORK

Energetic, colorful lines of paint and patterned shapes dance around each of her canvases. Mary uses thick acrylic paint and cut-paper collage as her primary materials. She uses scissors, palette knife painting, and finger painting to make her artwork. Her abstract artworks are joyful, playful, and childlike. The combination of floral shapes makes her work feel familiar and approachable. She has also adapted her designs into large murals, printed fabrics, greeting cards, and jewelry.

ARTIST’S WORLD

Mary’s art studio is in a large artist collective in the Northeast Arts District in Minneapolis. This area was voted as the best arts district in the country in 2016. Minneapolis is a thriving and dynamic city known for its progressive art scene, but it has also been host to many racial disparities since the Great Migration era. In 2020, the city protested in response to the police killing of George Floyd, sparking a new wave of the Black Lives Matter movement across the USA.

ACHIEVEMENTS

In 2018, Mary graduated from the Minnesota College of Art and Design (MCAD) with a master’s degree in graphic and web design. She collaborates with many local artists and product designers to share her work in new ways. From 2015–2017, Mary sold her line of makeup cases and phone covers in Target. Her work has been reprinted on magazine and book covers.

WHAT DO YOU THINK?

What type of emotions do you see expressed in Mary’s artworks?
How and why do artists play with their art materials?